



Deutsch-Philippinische  
Industrie- und Handelskammer  
German-Philippine Chamber  
of Commerce and Industry



# INDUSTRY IMMERSION GUIDEBOOK:

A blueprint to implement the Dual Education and Training Approach

---

Cebu, 19 November 2019

---

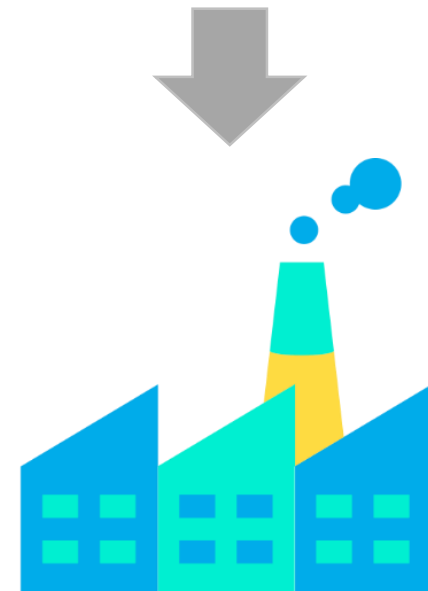
# DUAL EDUCATION & TRAINING: A STRATEGY FOR MAXIMUM LEARNING

Dual Education and Training promotes *two learning venues – the school and the company* – to maximize the potentials of students for immediate employment after graduation.



School  
Theoretical

Mandatory Industry  
Immersion in SHS opens the  
door for a DET approach!



Industry  
Practical

*Insert digitank video for companies*



# Industry Immersion Guidebook

for Dual Education and Training

## Objectives:

- a blueprint for schools and their industry partners to implement the DET approach in their respective specializations.
- provides suggestions, tips and tricks, reminders based on our lessons learned from the Kto12PLUS Project
- captures the roles and responsibilities of the DET stakeholders before, during and after their immersion.
- contributes to improve the implementation of immersion and to make it more efficient and effective.

# CONTENT STRUCTURE

---

- 1) Background
- 2) Benefits of DET
- 3) Stakeholders
- 4) Phases





# Industry Immersion Guidebook

for Dual Education and Training

# QUALITIES OF THE IIG

---

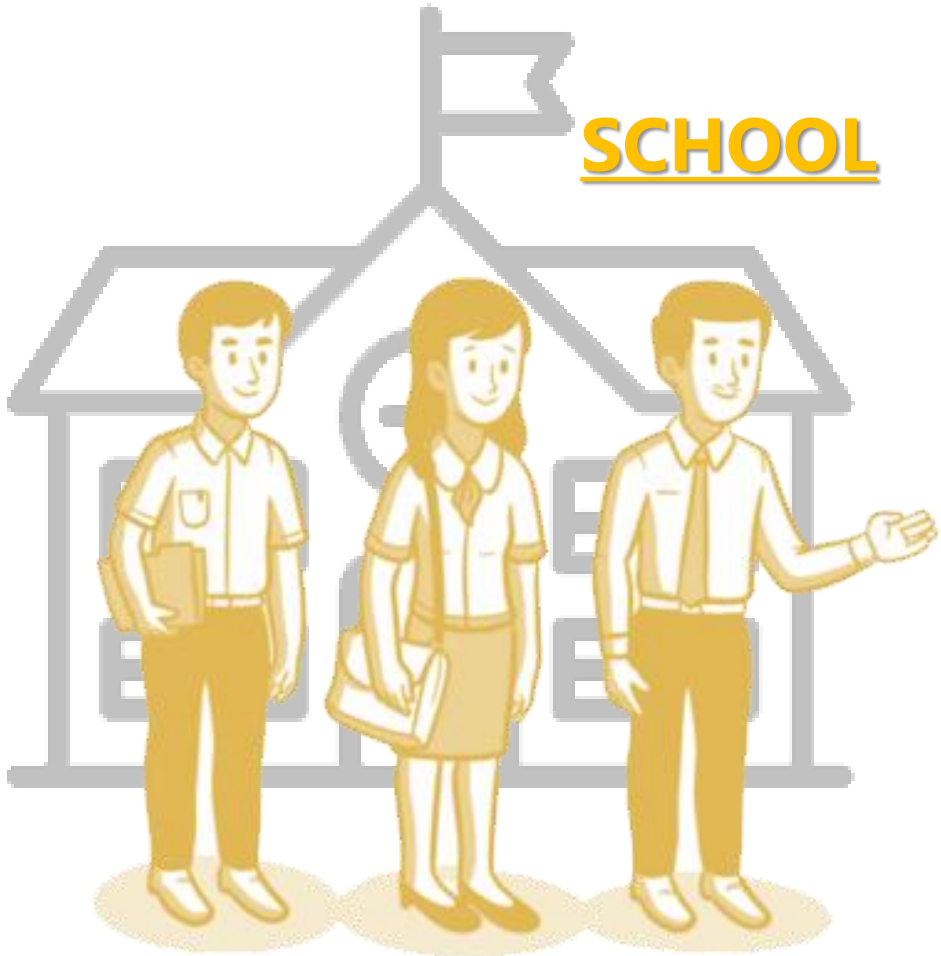
- Generic yet focused
- Interactive and popular
- Values experiential learning

*Insert digitank video for companies*

---

# STAKEHOLDERS IN DET

## SCHOOL



## STUDENTS



## COMPANY





---

# ROLES & RESPONSIBILITIES



## SCHOOL

- Company engagement
- Curriculum enhancement
- Delivery of theoretical content
- Grading, monitoring and evaluation

---

# ROLES & RESPONSIBILITIES



## STUDENT

- Active participation in training
- Logbook keeping

---

# ROLES & RESPONSIBILITIES



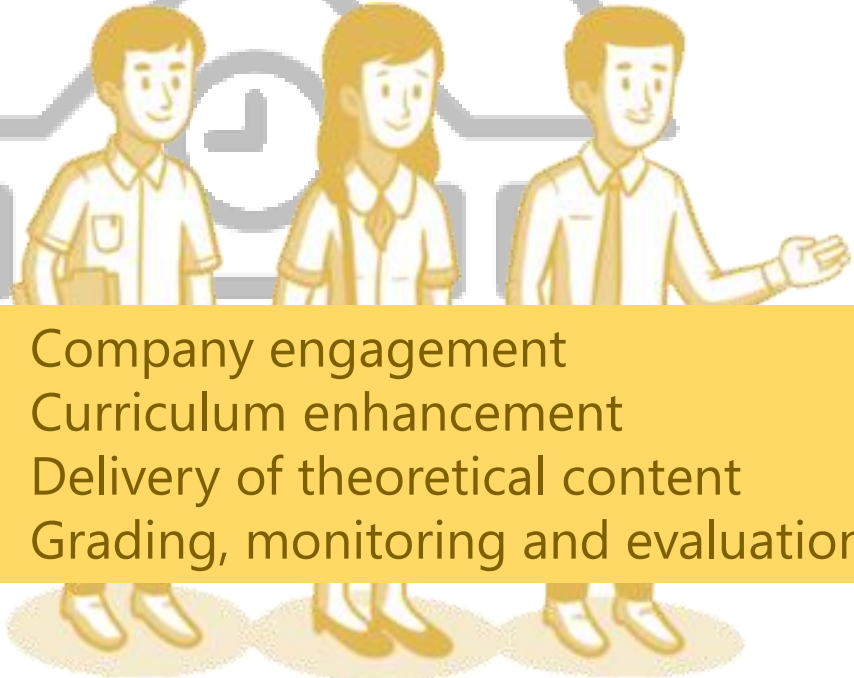
## COMPANY

- Validation of Curriculum
- Delivery of practical training through trained in-company trainer
- Supervision and Guidance of students' learning through the in-company training plan and logbook

# ROLES & RESPONSIBILITIES

## SCHOOL

- Company engagement
- Curriculum enhancement
- Delivery of theoretical content
- Grading, monitoring and evaluation



## STUDENT

- Logbook keeping
- Training plan



## COMPANY

- Validation of Curriculum
- Delivery of practical training
- Supervision and Guidance of students' learning



# PHASES OF DET

---

- Preparation
- Actual Immersion
- Post-Immersion



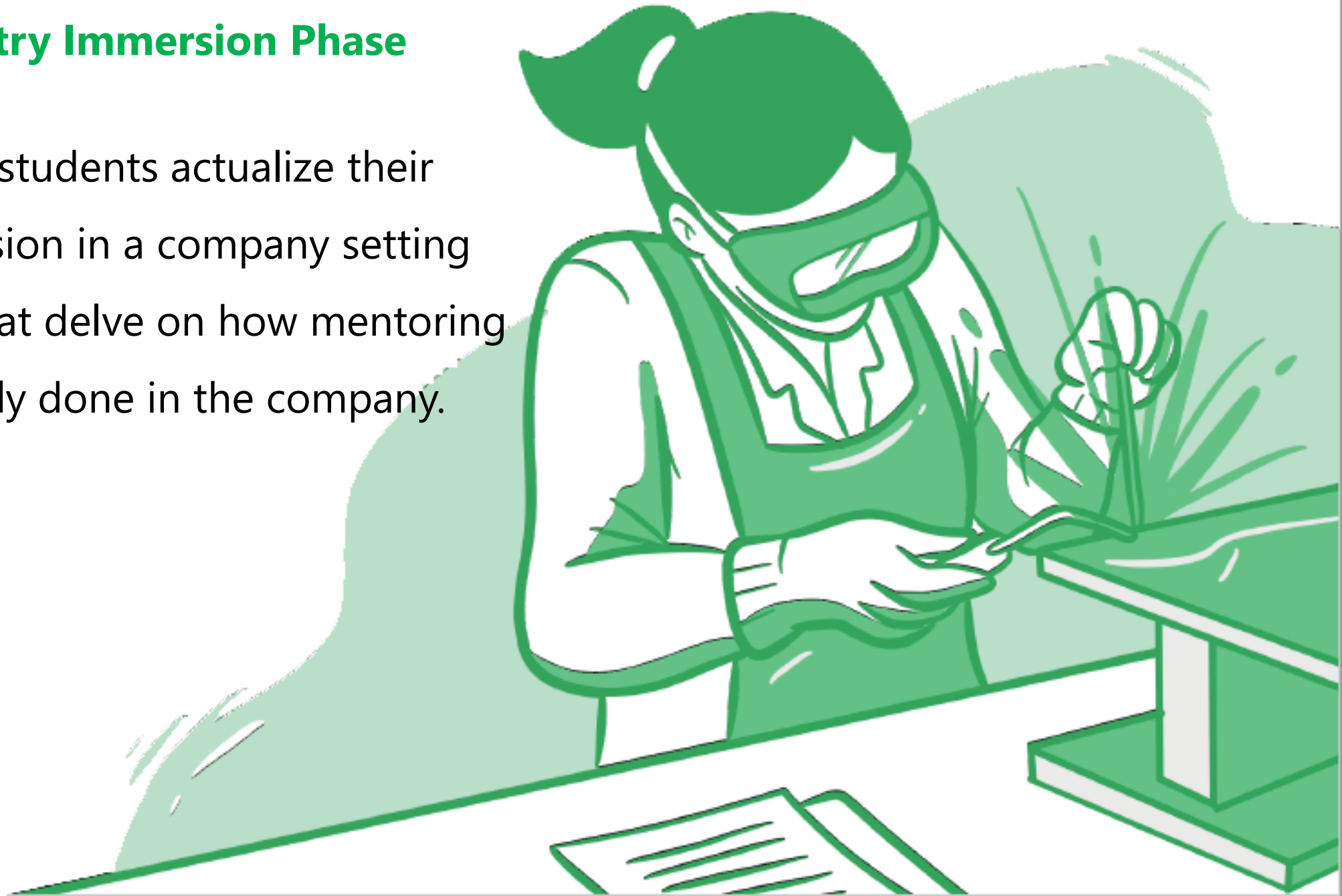


## 1) Preparatory Phase

Identifies a series of activities that the school needs to undertake in order to lay down the foundation to implement DET.

## 2) Actual Industry Immersion Phase

Shows how the students actualize their industry immersion in a company setting and activities that delve on how mentoring can be effectively done in the company.



### 3) Post-Industry Immersion Phase

Includes activities that will help the school assess the performance of the SHS students to determine whether they have complied with the competency requirements.





---

# INDUSTRY IMMERSION PHASES

## Preparatory



- Scouting & Selection of Partner Companies
- Review of curricular program
- Development of In-Company Training Plan
- Immersion Orientation


## Immersion



- Deployment
- Monitoring
- Exit Trialogue

## Post Immersion



- Assessment
  - Sustained M & E
  - Experience Sharing
- 



---

## PREPARATORY

---

# INDUSTRY ENGAGEMENT



Conduct Industry mapping of potential partner companies



Establish initial contact with local chamber or associations



Review and enhance school's curricular program



Development of In-Company Training Plan and Orientation



---

**ACTUAL IMMERSION**

---

## ACTUAL IMMERSION

### Deployment

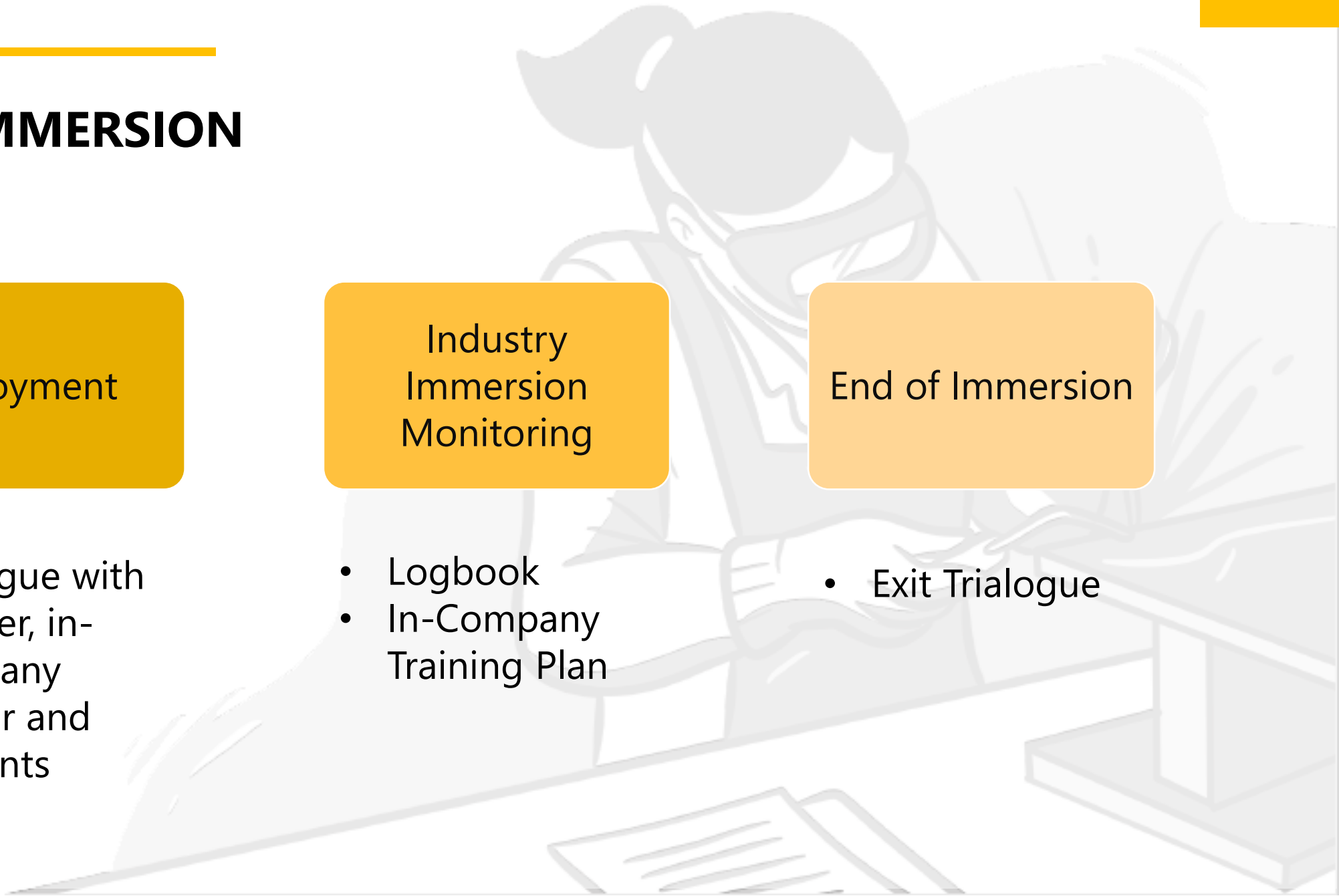
- Triologue with teacher, in-company trainer and students

### Industry Immersion Monitoring

- Logbook
- In-Company Training Plan

### End of Immersion

- Exit Triologue



---

## ACTUAL IMMERSION

- Monitoring of learning progress based on the immersion logbook
- Adherence to in-company training plan
- Overall immersion monitoring (work environment, care & safety, morale & attitude)



---

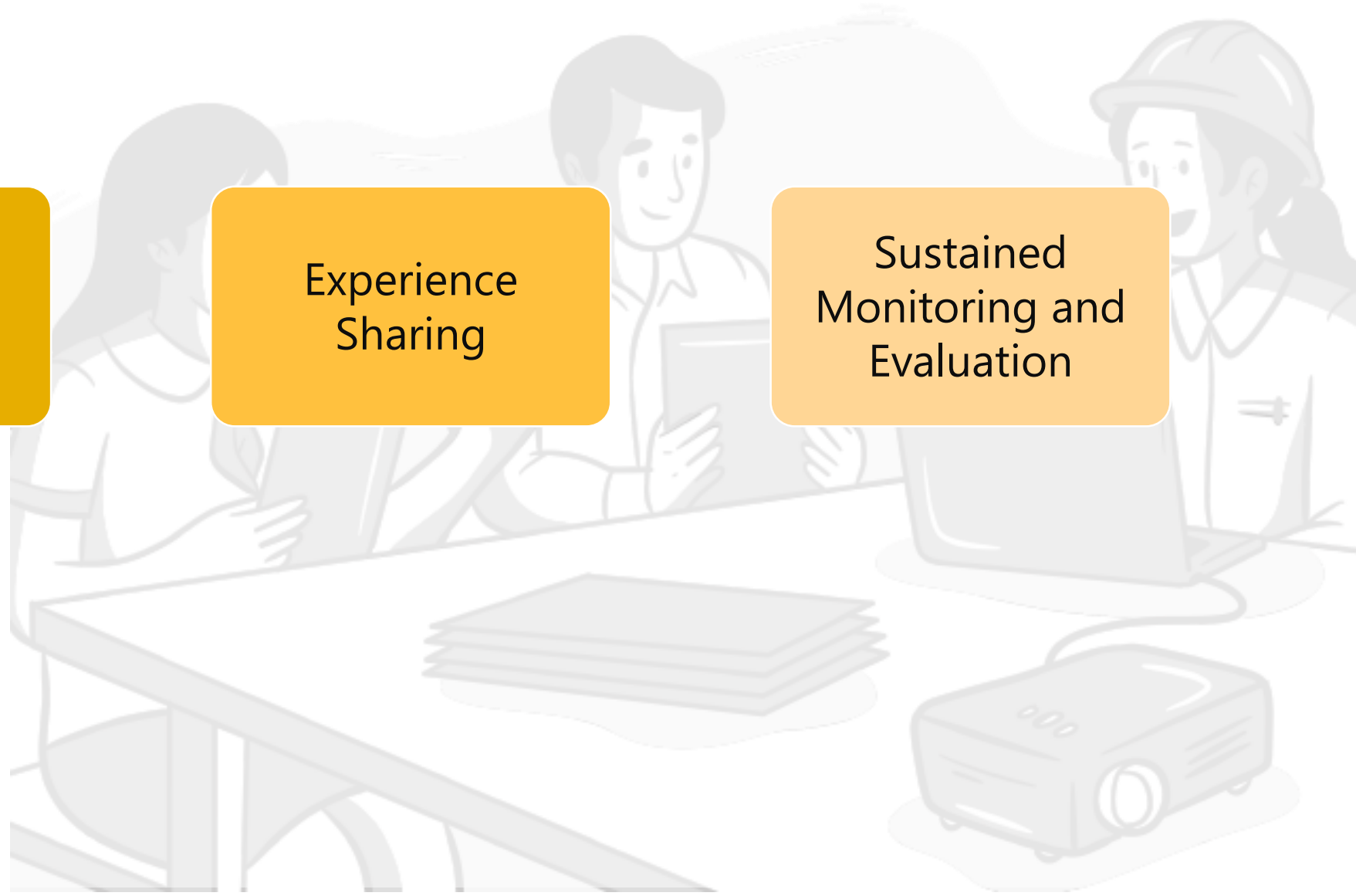
# POST-IMMERSION

Assessment

- TESDA NC Assessment
- Industry-organized Assessment

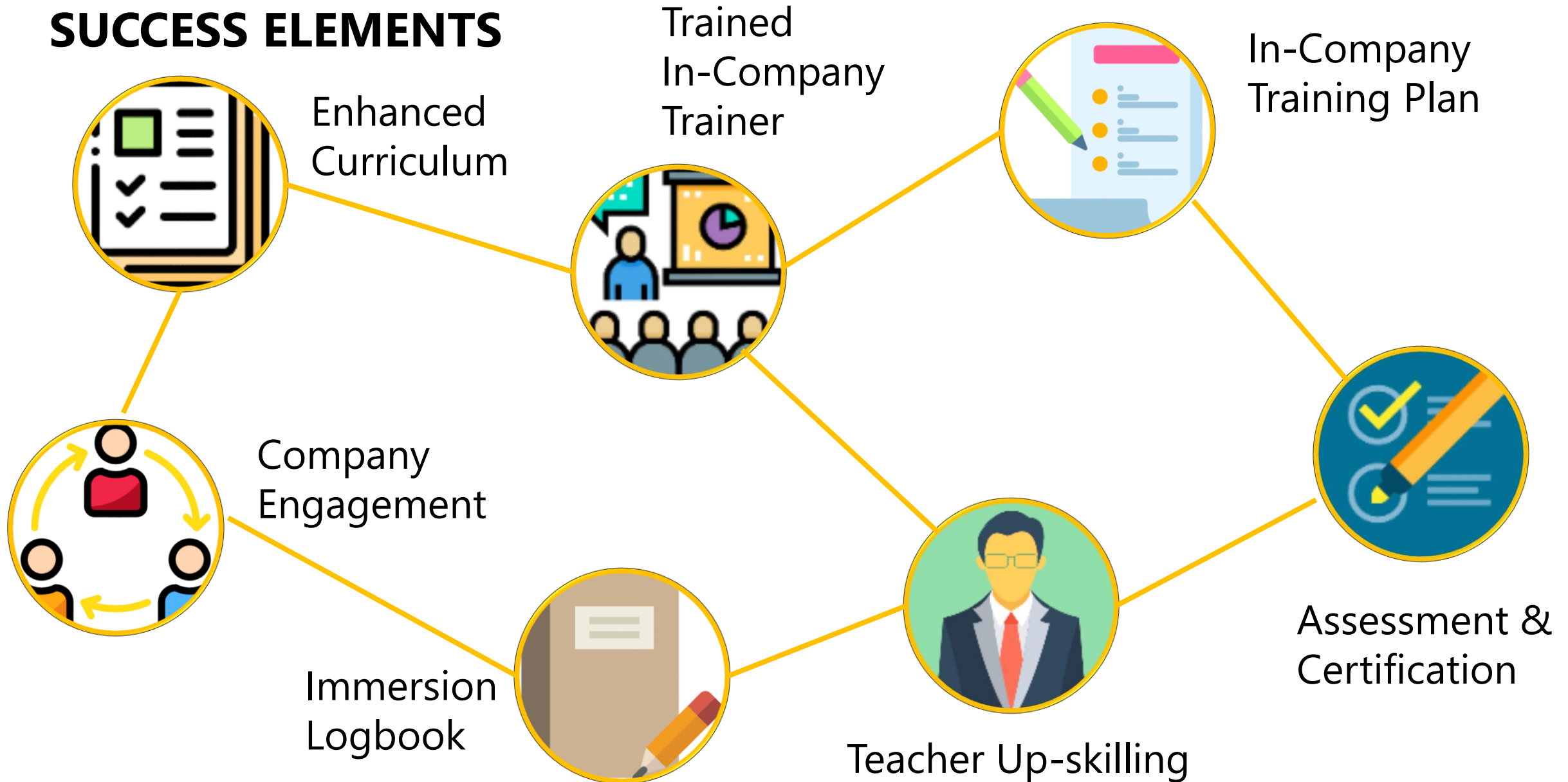
Experience Sharing

Sustained Monitoring and Evaluation





# SUCCESS ELEMENTS





---

# QUESTION & ANSWER

